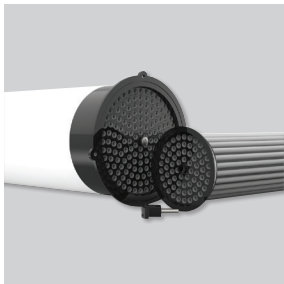




Decentralized ventilation unit, with heat recovery, for single rooms and domestic or commercial applications. Perfect integration in the room thanks to the exchanger located inside the wall. Heat recovery performance up to 75% (150mm model). The 100mm diameter model can replace existing bathroom extract fans. Designed for continuous operation, the unit adjusts the airflow proportionally to humidity level, ensuring excellent indoor air quality.

**Construction features**

- DC motors.
- Efficient centrifugal impellers.
- Tubular heat exchanger.
- Proportional airflow according to humidistat.
- Automatic summer mode.
- Manual boost facility.
- Automatic frost protection.
- Supply voltage: 230V/12V.



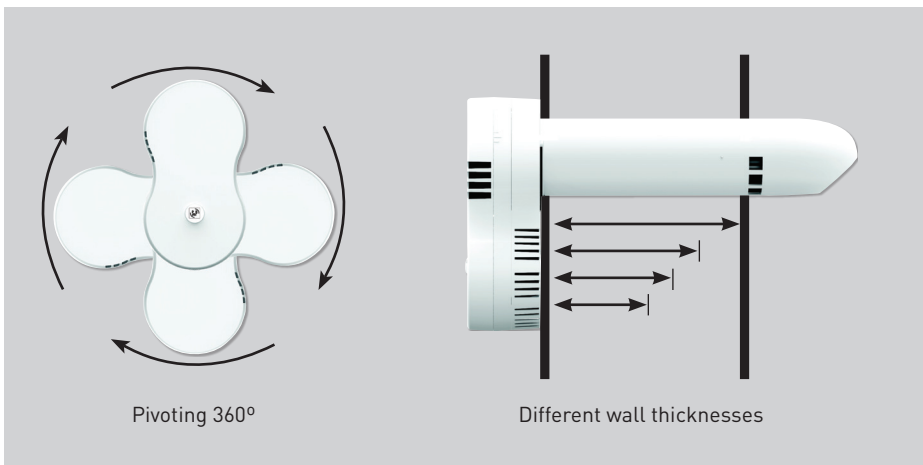
**Tubular heat exchanger**  
 100 or 150 mm.



**Maintenance and cleaning:** Easy access.



**Specific applications**



**Fitting alternatives**



**Frontal view**

**TECHNICAL CHARACTERISTICS**

Model	Ø (mm)	Wall (mm)	Voltage (V)	Minimum airflow (m³/h)	Absorbed power (W)	Sound pressure level [dB(A)] at 3 m	Wiring diagram* (n°)	Boost (m³/h)	Absorbed power (W)	Sound pressure level [dB(A)]	Maximum performance (%)
100/310	100	310	230	25	4,9	22	46	45	20,4	39	68
100/430		430			5,2	22	46		21,9	39	
100/500		500			5,2	22	46		22,1	39	
100/600		600			5,8	23	46		23,7	41	
150/330	150	330	230	25	4,6	23	46	45	14,9	36	75
150/430		430			4,9	24	46		15,5	36	
150/500		500			4,7	22	46		14,7	36	
150/600		600			5,1	23	46		16	37	

\* See section of Wiring Diagrams.

**DIMENSIONS (mm)**

